

exhibitor catalog

- furnishings
- carpet
- drape
- custom rental exhibits

prestige

computer pedestals

Prestige computer pedestal

Our cleverly designed pedestal features an integrated cord management system that conceals wires and cables. The 36" wide x 18" deep roomy work space is complimented by a 20" diameter round shelf for your monitor, with a neatly tucked away CPU storage shelf.

The final touch is a four -outlet surge protector hidden under the workstation. The pedestal is offered in maple, cherry or frosted acrylic, with a powder coated black base. Computer not included.



prestige

furnishings



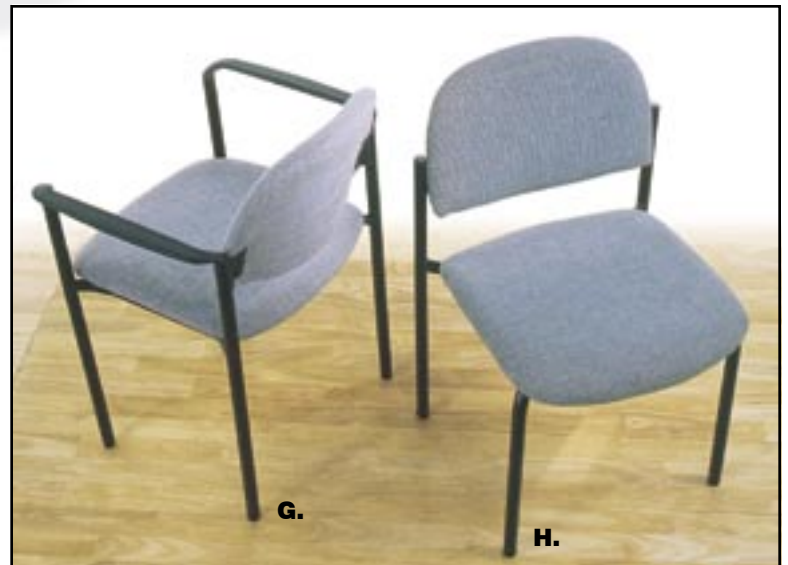
One stop shopping

In addition to our wide range of services, Champion also offers two complete lines of furniture, carpet, and accessories.

Our Prestige line offers you a distinctive and attractive look, while our standard line is functional, versatile, and of course slightly more economical.

Whatever your choice, we guarantee you can outfit your entire booth with quality and attractive furnishings.

- A.** prestige maple computer pedestal
- B.** prestige frosted acrylic computer pedestal
- C.** prestige cherry computer pedestal
- D.** prestige bar stool (sand w/ black diamond point)
- E.** prestige side chair (black)
- F.** prestige arm chair (black)
- G.** prestige arm chair (grey)
- H.** prestige side chair (grey)
- I.** prestige conference table (42" dia. x 30"h)



standard furnishings

Classic styling, versatile and simple.

J. standard bar stool

K. standard arm chair

L. standard side chair

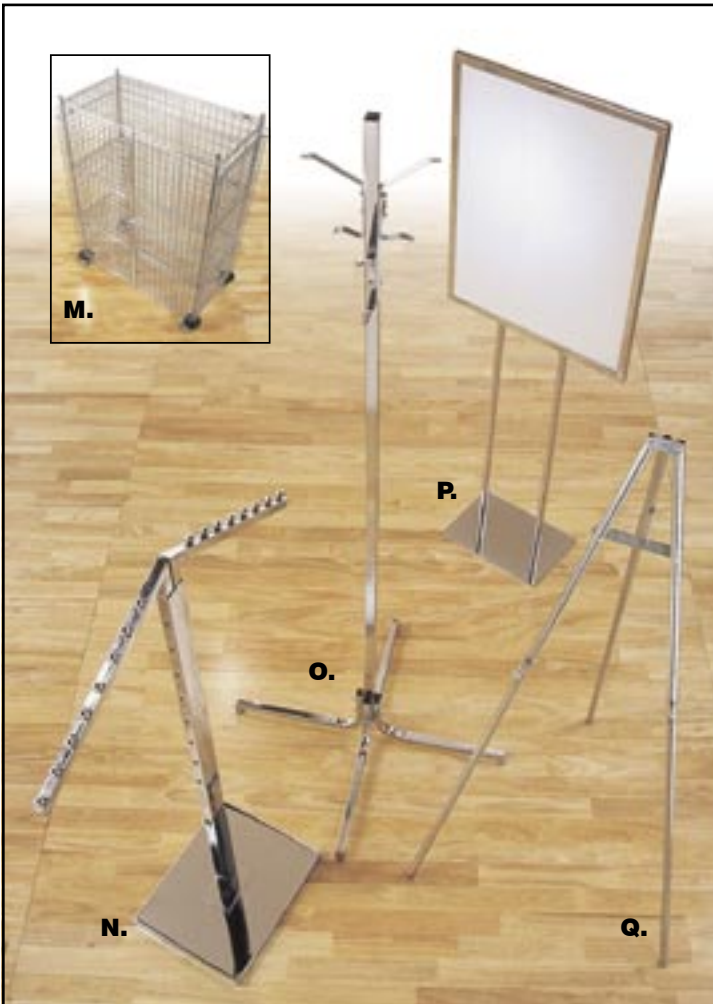


standard accessories



R.

- M.** security container
- N.** chrome bag stand
- O.** clothes tree
- P.** 22" x 28" chrome sign stand
- Q.** aluminum easel
- R.** 4' x 8' display board
- S.** stanchion (pictured with chain)
- T.** literature stand
- U.** raffle drum



M.

P.

O.

N.

Q.



S.

T.

U.

draped tables

**Draped display tables, counters,
and risers.**

*Please refer to our order page for a
complete list of table sizes available.*



draped display tables available in the following colors:



royal blue



navy blue



red



white



gold



hunter green



seafoam



black



silver



dusty rose



burgundy



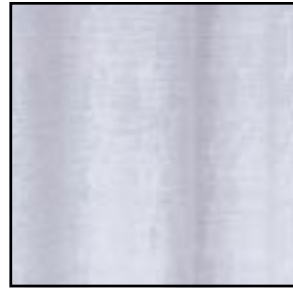
plum



royal blue



red



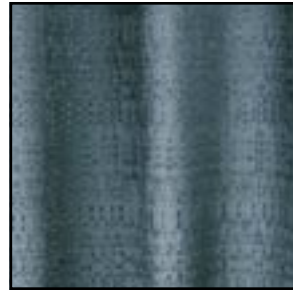
white



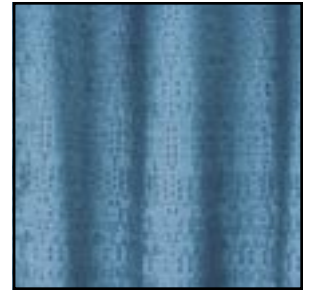
gold



expo green



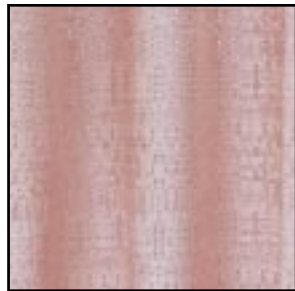
hunter green



seafoam



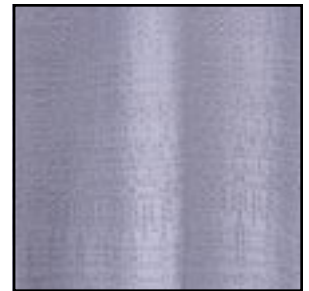
light beige



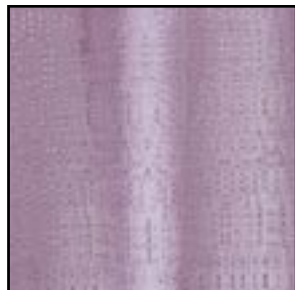
peach



black



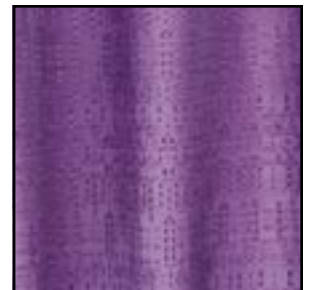
silver



dusty rose



burgundy



plum

booth drape

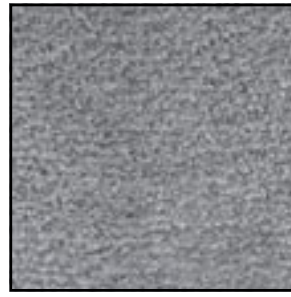
Color may vary due to facility lighting, printing limitations and dye lot differences.



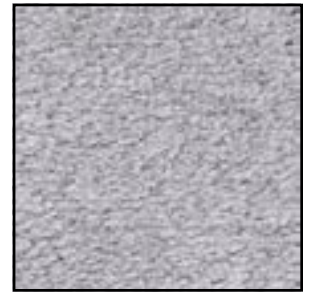
emerald



red



charcoal



grey pearl



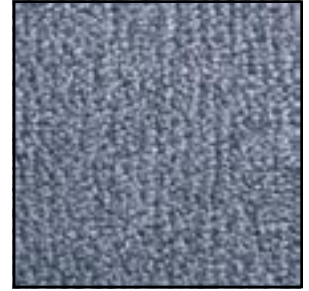
plum



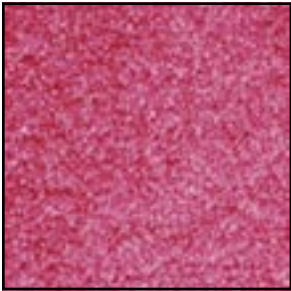
silver cloud



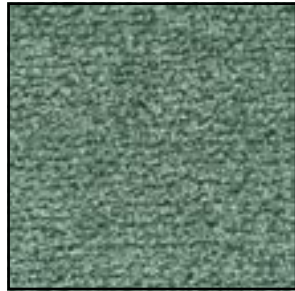
blue mist



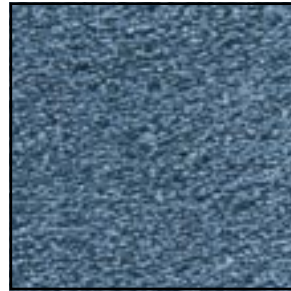
colony blue



berry



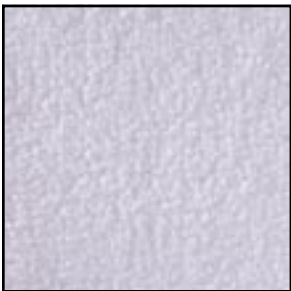
peacock



navy



black



white



french beige



burgundy



creme

prestige

30oz.

anti-static carpet
with Scotchguard™

Splendidly thick and plush, our 30oz carpet adds comfort and pizzazz to your exhibit space. Select from one of sixteen colors with an additional 4mil poly covering to protect your carpet during the show move in.

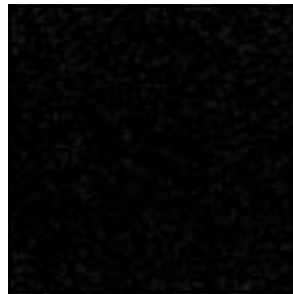
& free poly covering

standard

16oz. carpet



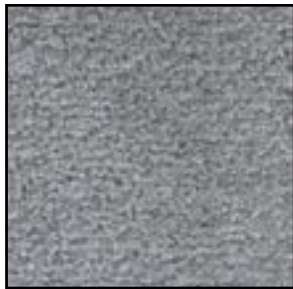
blue



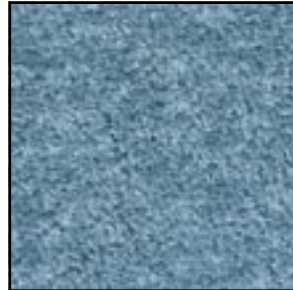
black



burgundy



grey



seafoam



navy



red



green



plum

custom exhibits

10'x10' rental booths



Our turnkey solution will save you time and money, and is guaranteed to be ready upon your arrival to your booth space.

price package A

- header sign (not backlit)
- standard color carpet
- track light with 1 head per panel (power not included)
- set and removal
- opening day cleaning

price package B

- header sign (not backlit)
- standard color carpet
- track light with 1 head per panel (power not included)
- 40" h side returns
- (3) 12" flat shelves
- set and removal
- opening day cleaning



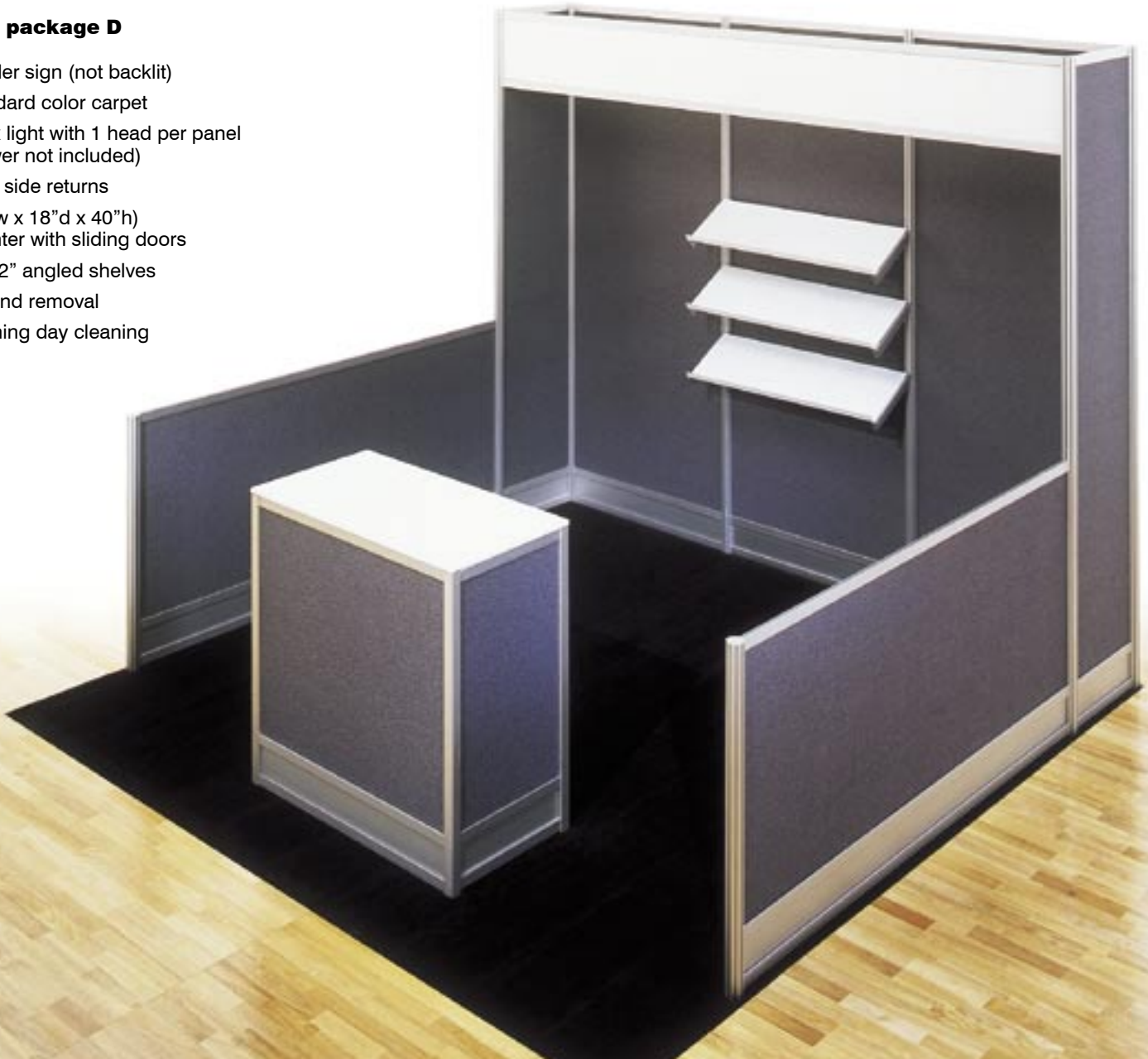


price package C

- header sign (not backlit)
- standard color carpet
- track light with 1 head per panel (power not included)
- 40”h side returns
- (3) 12” angled shelves
- set and removal
- opening day cleaning

price package D

- header sign (not backlit)
- standard color carpet
- track light with 1 head per panel (power not included)
- 40”h side returns
- (38”w x 18”d x 40”h) counter with sliding doors
- (3) 12” angled shelves
- set and removal
- opening day cleaning



custom

exhibits

10'x20' rental booths



price package E

- header sign (not backlit)
- standard color carpet
- track light with 1 head per panel (power not included)
- 40" h side returns
- 2 (39" w x 18" d x 40" h) counters with sliding doors
- set and removal
- opening day cleaning

price package F

- header sign (not backlit)
- standard color carpet
- track light with 1 head per panel (power not included)
- 40" h side returns
- (6) 12" flat shelves
- (1) storage closet
- set and removal
- opening day cleaning





price package G

- header sign (not backlit)
- standard color carpet
- track light with 1 head per panel (power not included)
- 40”h side returns
- (78”w x 40”d x 40”h) counter with sliding doors
- (5) 12” flat shelves
- 78” diagonal meeting area
- set and removal
- opening day cleaning

price package H

- header sign (not backlit)
- standard color carpet
- track light with 1 head per panel (power not included)
- 40”h side returns
- (78”w x 40”d x 40”h) counter with sliding doors
- (5) 12” flat shelves
- 78” diagonal meeting area
- set and removal
- opening day cleaning
- (4) prestige chairs
- prestige table (floral & A/V not included)

panels available in these colors & materials

laminated panels



fabric panels (velcro friendly)



custom exhibits

20'x20' rental booths

Let us help you!

If you don't have the time, or you don't want the hassle, then rely on Champion to provide you with a custom rental exhibit.

If none of these designs catch your eye, simply give one of our professional designers a call to provide you with your own personalized design along with a price that fits your budget.

Dial 1.800.387.7469 and ask to speak to one of our custom exhibit representatives.

price package I

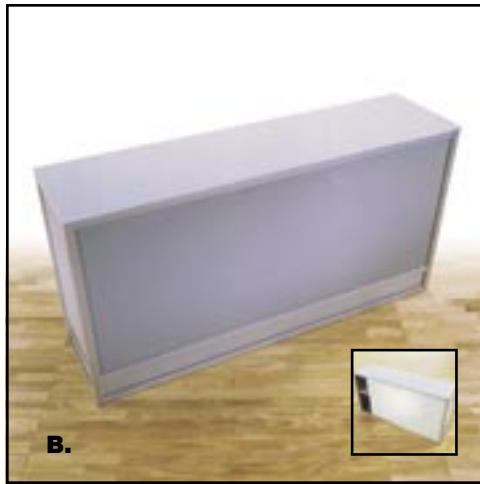
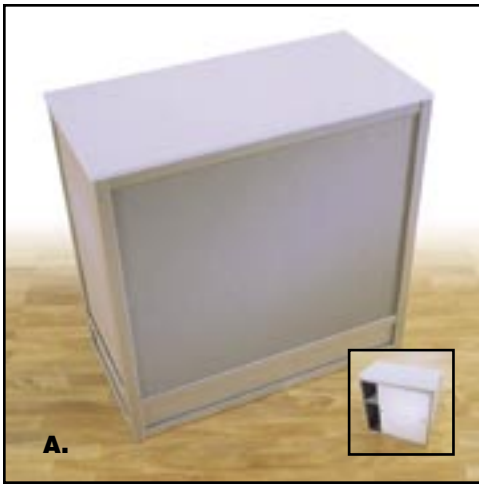
- header sign (not backlit)
- standard color carpet
- track light with 1 head per panel (power not included)
- set and removal
- opening day cleaning



price package J

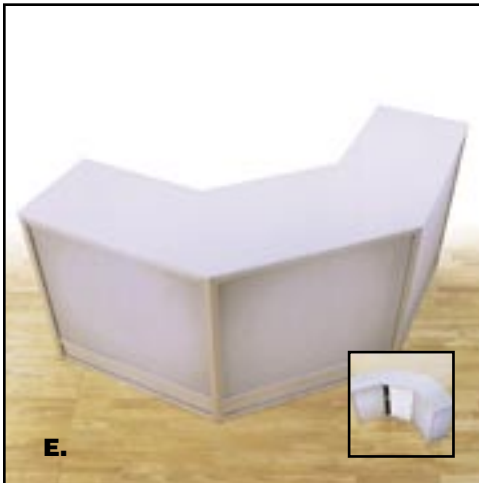
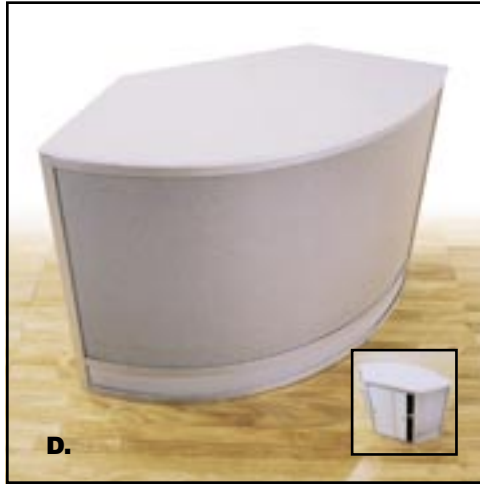
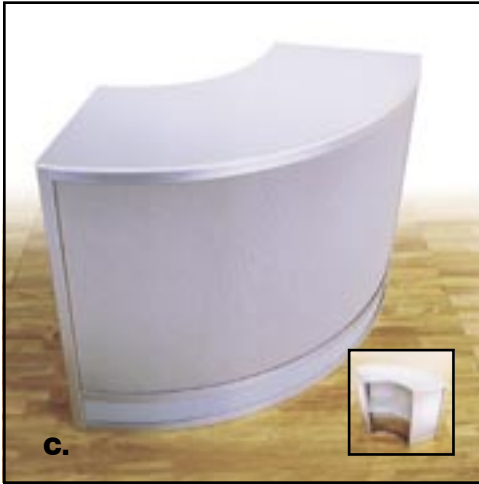
- header sign (not backlit)
- standard color carpet
- track light with 1 head per panel (power not included)
- (4) prestige chairs
- (1) prestige table
- (1) media rack
- set and removal
- opening day cleaning (floral & A/V not included)





Enhance your display with functional and stylish accessories from Champion.

- A.** 40" h x 39" w x 18" d counter
- B.** 40" h x 78" w x 18" d counter
- C.** 40" h quarter round counter with shelf storage
- D.** 40" h quarter round counter with sliding door storage
- E.** 40" h x 96" w x 43" d 45° counter
- F.** 40" h x 39" w x 18" d glass display counter
- G.** 40" h x 78" w x 18" d glass display counter



rental booth accessories

rental booth accessories

- H.** black clip on spotlight
- I.** long arm spotlight
- J.** brochure holder (velcro adhesive)
- K.** 96" h x 39" w wire wall panel for attachments, or just for a unique look.
- L.** 96" h x 20" w x 20" d vertical display cabinet
- M.** 39" w x 12" d angled shelf
- N.** 39" w x 12" d flat shelf

